



TECHEDGE GROUP

Become a Techedger!



Confidential Content - Do not duplicate or distribute without written permission from Techedge





Meet the Speaker

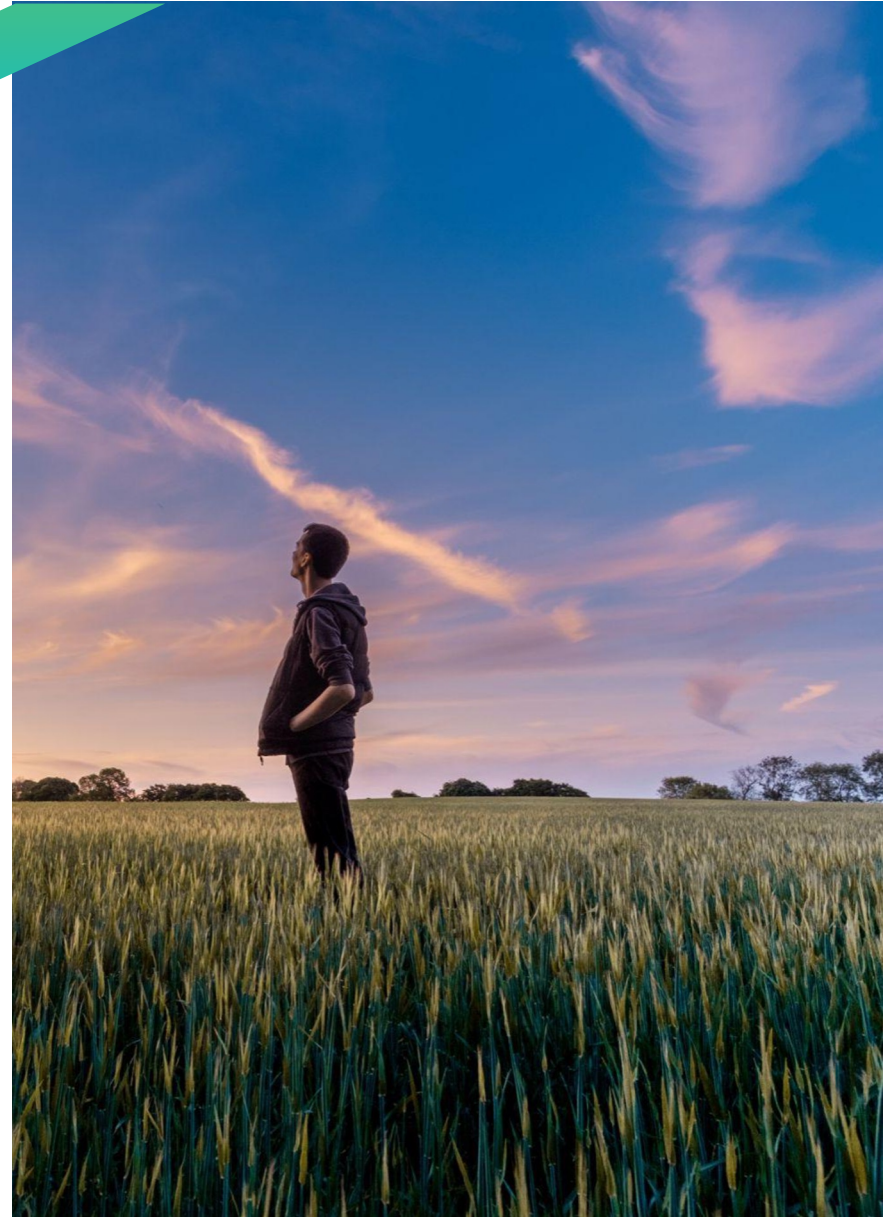
Giorgia Lavazza
HRBP





TODAY'S AGENDA

1. Where we are
2. Walk with us
3. Work like a Techedger
4. Where are we going
5. Where we could lead you





Where we are

**+2.500
People**

+11 Countries
EMEA, NAFTA, LATAM

Supporting
both Fortune
500 and
Midmarket

**Born in
2004**

**+12
INDUSTRIES**

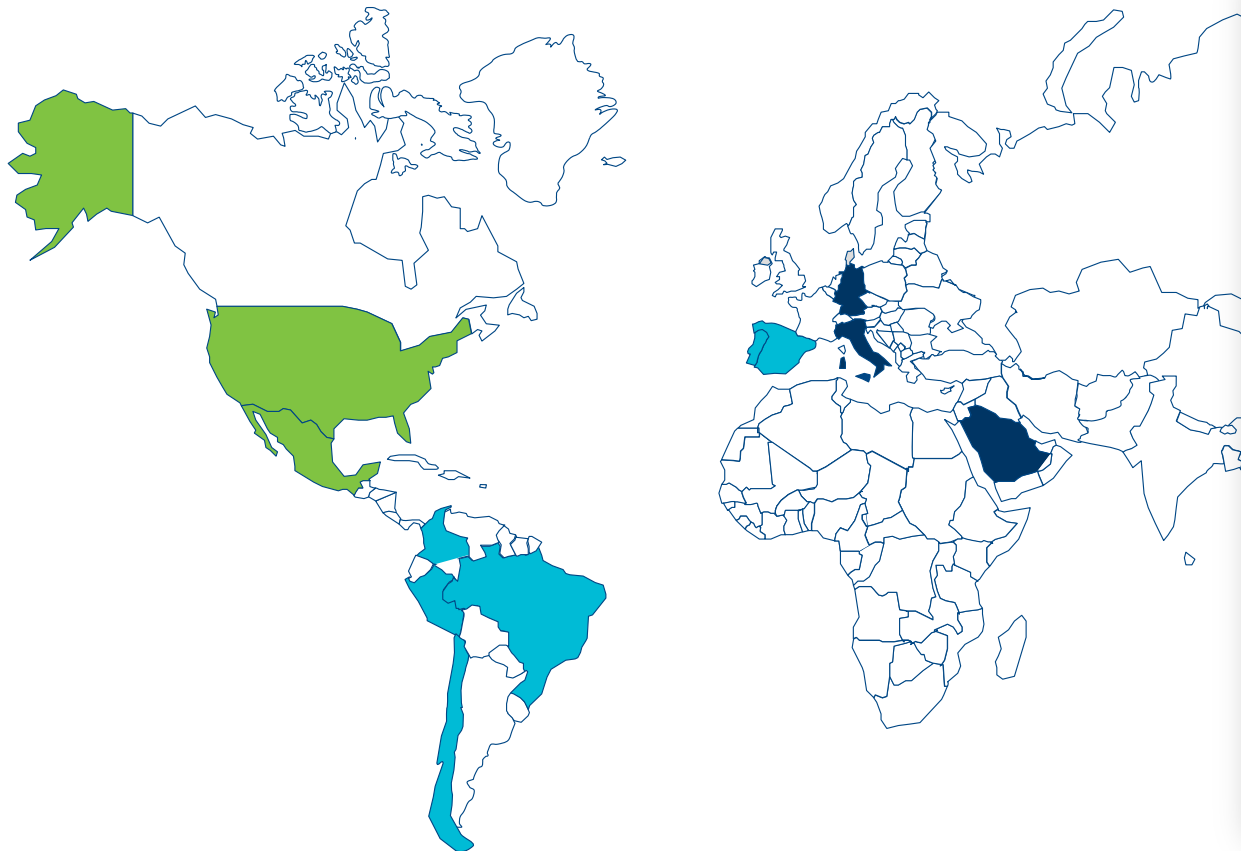
FASHION / RETAIL
OIL & GAS
WHOLESALE DIST.
MANUFACTURING
CPG
AUTOMOTIVE
TELECOMM
LIFE SCIENCES
& MORE



100%
Client
Retention



Where we are



EMEA

Countries

Italy, Germany, Kingdom of Saudi Arabia

Director

Domenico Restuccia

IBERIA & LATAM

Countries

Spain, Portugal, Brasil, Colombia, Perù, Chile

Director

José Manuel Nieto

NORTH AMERICA

Countries

USA, Mexico

Director

Sergio Cipolla



Where we are



Managing Directors

- Roberto Candido
- Marco Scotti

Offices

- Asti
- Brescia
- Lucca
- Milano
- Padova
- Pescara
- Roma
- Torino



START UP

Top SAP and Oracle partner in Italy



PORTFOLIO EXPANSION

Internal development and M&A to expand our offering

FOOTPRINT EXPANSION

Internal expansion to support our global clients integration of Techedge España y Latino América

ACCELERATION

Acquisition of NIMBL (beginning of 2018)



Walk with us

Being part of Techedge means belonging to a rewarding and flexible team made of passionate and easy going professionals.



Values we share



CUSTOMERS ARE OUR
(MAIN) OBSESSION



TRANSPARENCY &
LOYALTY ARE
FUNDAMENTAL



OWNERSHIP



TEAMWORK



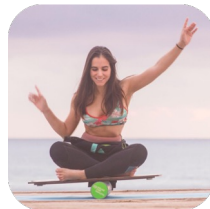
EVERY VOICE **COUNTS**



LEARN, BE CURIOUS,
**CHALLENGE THE
STATUS QUO**



BRING NEW IDEAS TO
LIFE, **EVERY DAY**



MAKE A **WORK/LIFE
BALANCE**



BE **EXCEPTIONAL**





Techedger's Guiding Principles

Our people,
you, are our
one asset!

- **Quality of Life**
We believe that satisfaction with one's quality of life leads to creative and effective work.
- **Sharing**
We help each other. In a growing company there is room for everyone's success.
- **Trust**
Just as we are loyal and ethical with our clients, just as we recruit for people who show to be clear and trustworthy.
- **Merit**
We look out for merit and we are ready to reward those who shine!



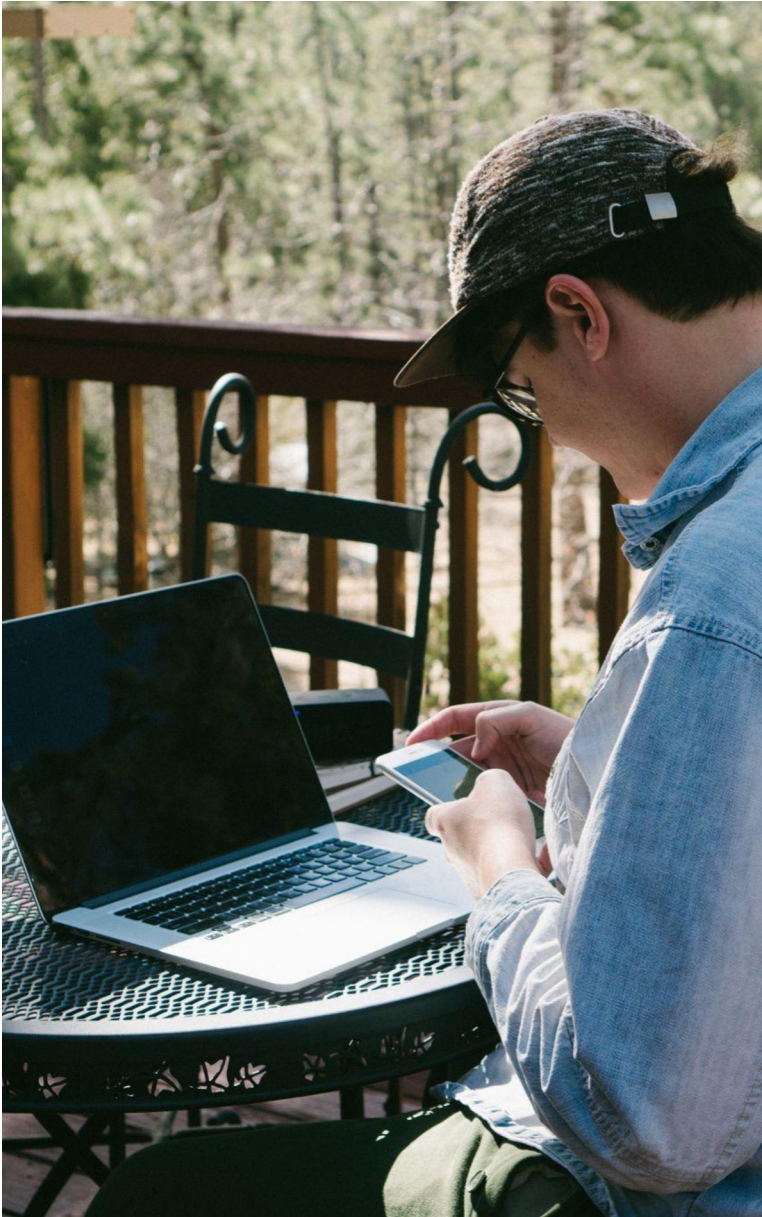
Your Career Path

You will start as a **Junior Consultant**, the entry level for new graduates.

You'll be offered a permanent contract and slowly become an expert on a range of components, products and processes.



It can take as short as 8 years to go from consultant to manager!



What being with us looks like

Smart Working

We want to become ever more phygital.
Pick the place to work that makes you more productive!

Young and informal environment

Our Techedgers are on average 36 years old.
Sounds quite welcoming, doesn't it?





What being with us looks like



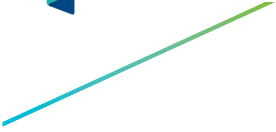
Continuous Learning

Academies, Buddy Program, E-learning, Technical certifications. We never stop learning, join us on our path to personal and professional growth.

Wellness and wellbeing

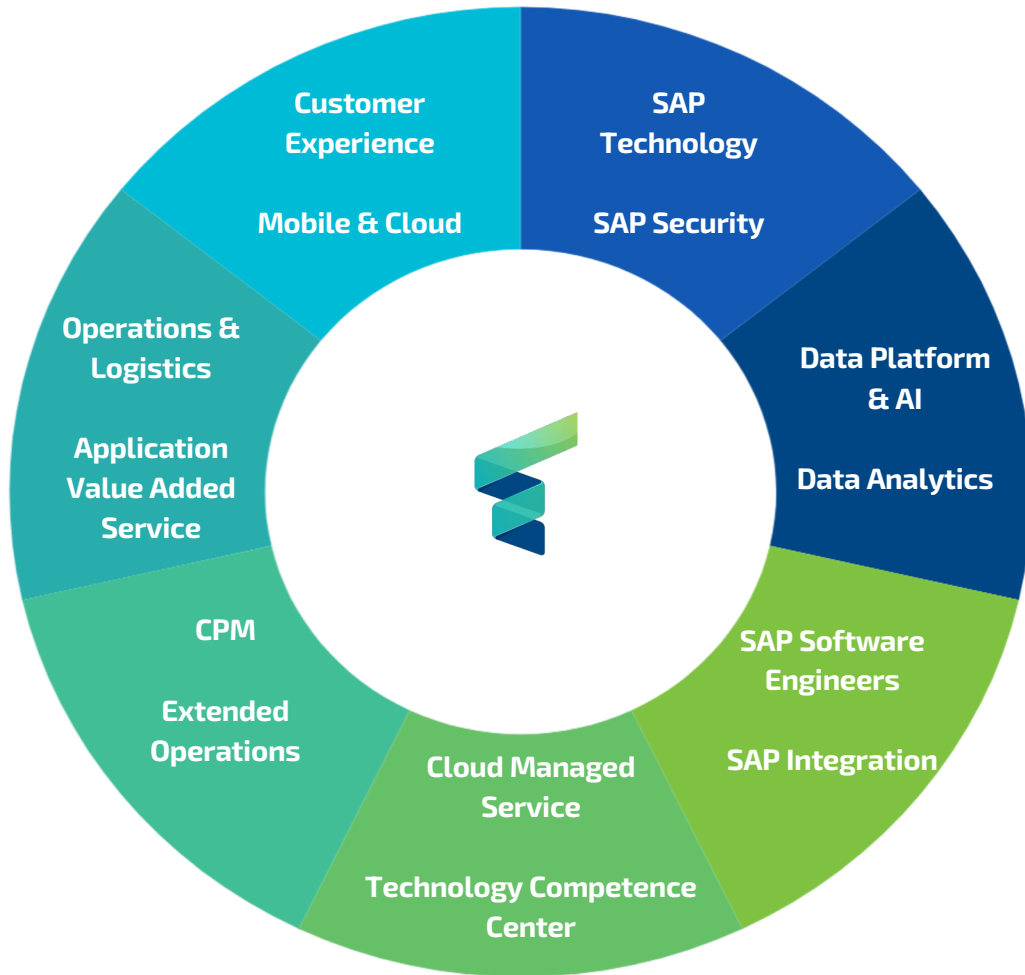
Done with your work day? Take care of your wellbeing with our smart approach to digital wellness. This is not your kind of pie? Just wait until the next Team building dinner!





Work like a Techedger

We have our way to make things done, where every clog is as fundamental as anyone else.



Enabling Business In a Digital World



What it means to work in Delivery

OBJECTIVES

Develop Techedge's Capabilities and competences, acquire and develop the skills required to deliver project, services and solutions, supporting business development and R&D efforts.

RESPONSIBILITIES

- Support market approach definition
- Projects, Solutions, Services delivery & management
- Professional nurturing
- Business development support
- R&D support

ROLES

PRACTICE DIRECTOR

Develops Techedge's strategy capabilities, team and competences required to successfully deliver project, services and solutions. Works in collaboration with Industry and R&D.

PRACTICE MANAGER

Focuses on the development of expertise, people, methodologies and tools, necessary to deliver project, services and solutions. Proactively supports Industry and R&D efforts.

DEPUTY PR. MANAGER

Supports the Practice Manager in the management of day by day activities, teams and projects. Proactively supports Industry and R&D efforts

PROJECT MANAGER

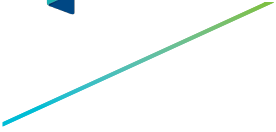
Is responsible for the proper execution of projects assigned to Techedge, as well as identifying and sharing with the client manager any additional opportunities that can be capture.

CONSULTANT & PROFESSIONAL

Is a subject matter expert, involved in projects as well as discovery & R&D activities. Is key to a successful delivery and drives the customer's perception of the Techedge brand.

ORGANIZATION

- Practices are centers of competence that contribute, jointly, to the success of Techedge.
- Every practice focuses on a set of specialty areas and works together with the other practices to deliver complex, multi-areas, projects.
- In addition to cross-industry expertise, practices develop knowledge and expertise that is relevant and applicable to the industries served by Techedge.
- The performance of the practice is determined by the sum of the performances of the projects to which it contributes.



Where we could lead you

If you want to be part of the Team, listen close! We are eager to get to know you.



1. Follow us on LinkedIn

Techedge Italia



2. Apply to our open positions by sending us your CV

giorgia.lavazza@techedgegroup.com



Thank you!



Disclaimer

This document and the information contained herein are proprietary to Techedge Group.

This document, either in whole or in part, may not be reproduced in any form or by any means without Techedge's prior written permission.

Any third-party names, trademarks and copyrights contained in this document are the property of their respective owners.